

ULTRA SMALL SUBMINIATURE BASICS

SINGLE BREAK, SNAP-ACTION, COMMERCIAL & MILITARY GRADES, ULTRA SMALL SUBMINIATURE

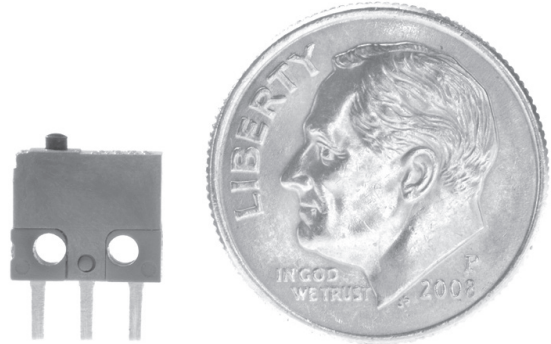
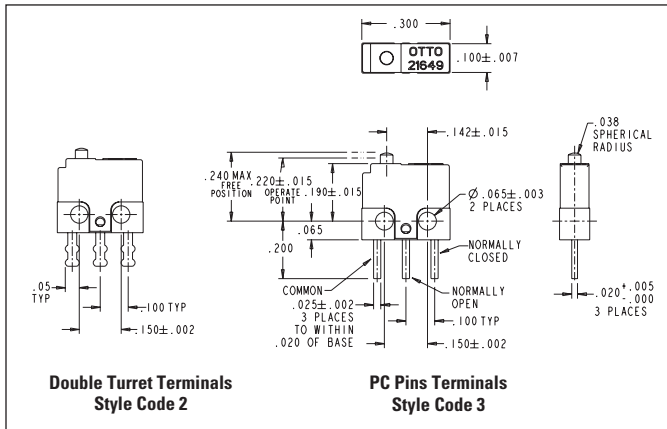
The B1 series basic switches are ultra-subminiature in size, designed to reliably switch logic level signals as well as up to 2 amps switching capacity for a minimum of 25,000 cycles. Mechanical life expectancy is in excess of one million cycles.

The molded housing is rugged and structurally stable. The terminals are molded-in and sealed against solder flux entering the switch. The terminals are available in a choice of double turret solder style and 0.020" x 0.025" PC pins.

The B1 series is also available with integral lever actuators as B1-5 series.

Features:

- **Ultra-compact: only 0.300" w x 0.255" h x 0.100" thick**
- **1 million cycle life, B1-5 Series**
- **Logic level switching capability**
- **Designed in accordance with MIL-PRF-8805/94**
- **Available in Commercial & Military grades**
- **Choice of solder or PC molded-in terminals**
- **Precision operating points**
- **RoHS compliant**



Standard Characteristics/Ratings:

ELECTRICAL RATINGS:

Load	Sea Level @ 28VDC or 115VAC, 60Hz	50,000 feet @ 28VDC
Resistive	2A	2A
Inductive*	0.5A	0.2A
DWV	1000Vrms	400Vrms
Logic Level	10mA @ 5VDC	10mA @ 5VDC

*L/R = 0.026

Electrical Life:	25,000 cycles
Mechanical Life:	B1 Series is 100,000 cycles (B1-5 Series is 1,000,000 cycles)
Seal:	Unsealed
Operating Temp Range:	-55°C to +125°C
Operating Force:	6 oz max
Release Force:	0.7 oz min
Operate Point:	0.220 +/- 0.015 inches from mounting holes
Overtravel:	0.003 inches min
Movement Differential:	0.002 inches nominal, 0.005 inches max
Pretravel:	0.015 inches max

MATERIALS:

Case:	Thermoset, blue
Cover:	Thermoplastic, blue
Button:	Thermoplastic, black
Terminals:	Brass, gold over nickel
Contacts:	Stationary: Silver with gold Moveable: Silver with gold
Terminal Hardware:	None provided
Mounting Hardware:	None provided

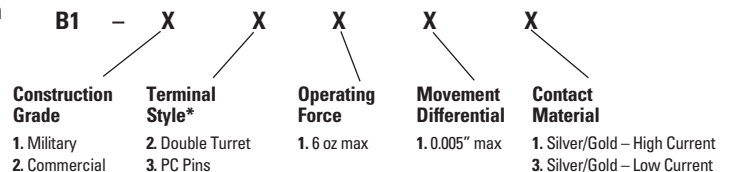
ORDERING INFORMATION:

B1 Basic

Select the OTTO B1 basic switch to match your specific circuit and mechanical requirements. To order, specify your requirement using the OTTO Part Number Code shown below.

Example: B1-12111 specifies Military grade construction, double turret terminals, 6 oz max operating force and silver/gold high current contacts.

B1 PART NUMBER CODE



* Wire leads available, contact factory.