

LP30M Pushbuttons

Large, LED-illuminated pushbuttons can be sealed watertight



The 30 mm diameter LP30M pushbuttons are rugged, attractive and LED illuminated. Icons and words for start/stop operation or other functions can be laser etched or pad printed.

These precision, snap-action switches are designed for long life in off-highway, material handling, industrial controls, marine, medical and other demanding applications.

- **Low-profile dome or concave-style button in translucent white, red or amber**
- **LP30M offers six standard LED colors: red, green, amber, blue, deep green and white**
- **Button can be laser etched or pad printed with words or legends**
- **Anodized aluminum housing can be laser etched with words or legends that will not fade or wear with continuous use**
- **OTTO's snap-action mechanism provides tactile feedback**
- **Normal Open (NO) or Two-Circuit (NO/NC) configurations**
- **Accommodates 2, 12 and 24VDC power; includes reverse voltage protection**
- **Switch works at logic level as well as up to 5A resistive**
- **Watertight to IP68S or moistureproof and dusttight to IP64**
- **Withstands -55°C to +85°C operating temperatures**
- **Includes hardware**

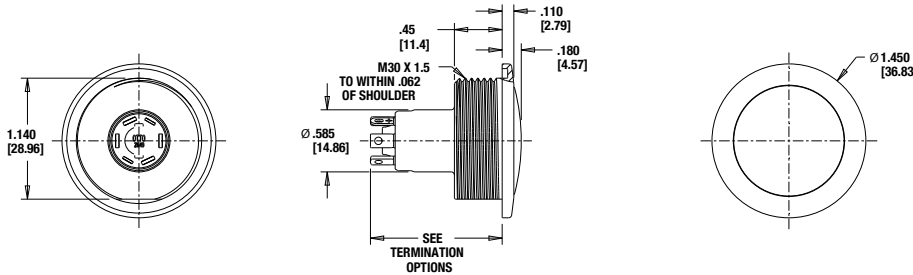
STOP HERE FOR SWITCHES WITHOUT LEGENDS

LP30M -

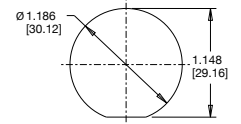
BUTTON & CASE STYLE	CIRCUIT/RATING/TERMINATION	LIGHT SOURCE TYPE*	SEAL LEVEL	OPERATING FORCE	CASE COLOR	BUTTON COLOR	LEGEND
B. LOW PROFILE DOME, STD DIA CASE, WITH PANEL SEAL OPTION	1. SPST N.O., STD CURRENT, SDR TERM, MOMENTARY	A. 2V RED LED N. 2V BLUE LED	1. DUSTTIGHT	2. 2.5±.5 LBS.	1. SILVER	A. TRANSPARENT ORANGE	THE CHARACTERS ARE ABSENT FROM THE PART NUMBER IF THERE IS NO LEGEND. CHARACTERS CORRESPOND TO OTTO ENGINEERING CODE FOR SAE GRAPHIC SPECIFICATION AS DEFINED IN THE OTTO ENGINEERING CATALOG. THE LEGEND WILL BE WHITE ON AMBER AND RED BUTTONS AND BLACK ON WHITE BUTTONS.
D. CONCAVE BUTTON, STD DIA CASE, WITH PANEL SEAL OPTION	2. SPDT 2-CIRCUIT, STD CURRENT, SDR TERM, MOMEN.	B. 2V GREEN LED Q. 12V BLUE LED	2. WATERTIGHT	4. 4±1 LBS.	2. BLACK	R. TRANSPARENT RED	
	3. SPST N.O., LOW-LOGIC LEVEL, SDR TERM, MOMENTARY	C. 2V AMBER LED R. 24V BLUE LED			3. RED	*W. TRANSLUCENT WHITE	
	4. SPDT 2-CIRCUIT, LOW-LOGIC LEVEL, SDR TERM, MOMEN.	G. 12V RED LED S. 2V DEEP GREEN			4. BLUE	B. TRANSLUCENT WHITE, PAINTED BLACK FOR BACKLIT LEGEND	
	5. SPDT 2-CIRCUIT, STD CURRENT, 48±3 INCH, 20 AWG LEADS, MOMENTARY	H. 12V GREEN LED U. 12V DEEP GREEN			5. TANGERINE (PANTONE 123U)		
	6. SPDT 2-CIRCUIT, LOW-LOGIC LEVEL, 48±3 INCH, 20 AWG LEADS, MOMENTARY	J. 12V AMBER LED V. 24V DEEP GREEN					
		K. 24V RED LED W. 2V WHITE LED					
		L. 24V GREEN LED X. 12V WHITE LED					
		M. 24V AMBER LED Y. 24V WHITE LED					

*ALL GREEN AND BLUE LEDS ARE RECOMMENDED FOR USE WITH TRANSLUCENT BUTTON COLOR W(WHITE) ONLY. DUE TO THE LOWER INTENSITY OF AMBER AND RED LEDS, THE ORANGE AND RED BUTTONS ARE TRANSPARENT (SEE THOUGH), INSTEAD OF TRANSLUCENT.

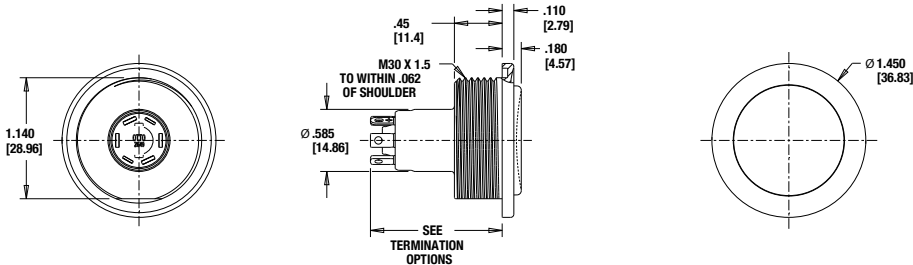
BUTTON AND CASE STYLE 'B'



RECOMMENDED PANEL CUTOUT

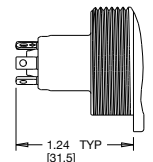


BUTTON AND CASE STYLE 'D'

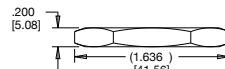
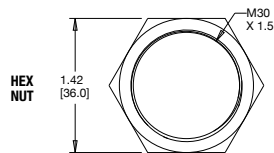
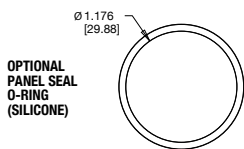


TERMINATION OPTIONS

STANDARD SOLDER TERMINALS



MOUNTING HARDWARE



WIRED TERMINATION

WIRE COLORS:
N.C.: GREEN (2)
N.O.: WHITE (2)
LED +: RED (1)
LED -: BLUE (1)

