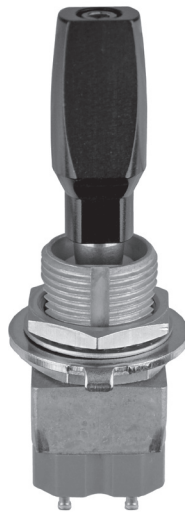


# Toggle Switches



SERIES	FEATURE	ACTUATION	MAX RATING (Resistive @ 28VDC)	SEAL RATING	MOUNTING	CIRCUITRY
T1	2 or 3 Position, 1 to 8 Poles, Lever Lock Option	Momentary, Maintained	8A	MIL-PRF-83731	15/32" or 7/16" Threaded	Multi-Pole B2, B3 Basics
T3	Snap Action, Lever Lock Option	Momentary, Maintained	5A	MIL-PRF-83731 - 15/32" Threaded Only	15/32" or 1/4" Threaded	SPST, DPST
T7	Lower Cost, Sealed	Momentary, Maintained	16A	IP68S & IP69K	15/32" Threaded	SPST, SPDT DPST, DPDT
T71	Thinner T7 Sealed	Momentary, Maintained	16A	IP68S & IP69K	15/32" Threaded	SPST, SPDT
T9	High Performance Lever Lock Option	Momentary, Maintained	20A	IP68S or MIL-DTL-3950	15/32" Threaded	SPST, SPDT DPST, DPDT
TE	Snap Action, Non-Teasible	Momentary, Maintained	5A	MIL-DTL-8834	15/32" or 1/4" Threaded	SPST, DPST