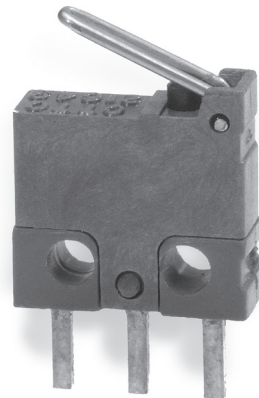
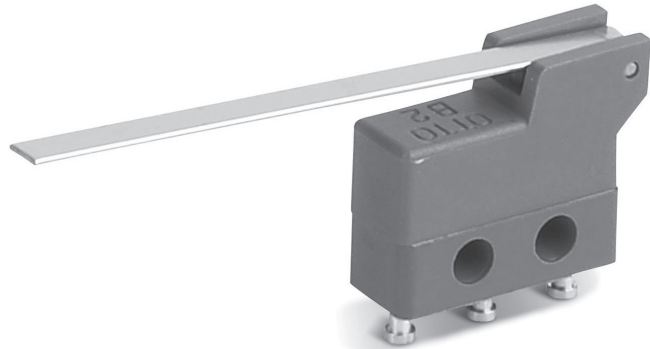
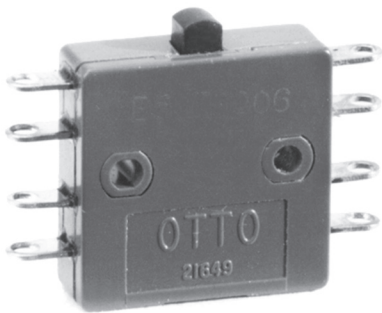


# Basic Switches



SERIES	FEATURE	MAX RATING (Resistive)	MECHANICAL LIFE	APPROVALS	CIRCUITRY
B1	Ultra Small Subminiature	2A	100,000	N/A	SPST, SPDT
B1-5	Ultra Small Subminiature with Integral Levers	2A	1,000,000	N/A	SPST, SPDT
B2	Subminiature	7A	50,000-250,000 (varies by part number)	UL (E61705), CSA (LR43865), DSCC (QPL8805)	SPST, SPDT
B2-5	Subminiature with Integral Levers	7A	100,000	UL (E61705), CSA (LR43865), DSCC (QPL8805)	SPST, SPDT
B3	Double Break Subminiature	8A	1,000,000	UL (E61705), CSA (LR43865), DSCC (QPL8805)	SPST-DB, SPDT-DB
B5	Double Break Miniature	10A	1,000,000	UL (E61705), CSA (LR43865), DSCC (QPL8805)	SPST-DB, SPDT-DB
B5-7	Double Break Miniature, Two Pole	10A	100,000	UL (E61705), CSA (LR43865), DSCC (QPL8805)	DPDT-DB